



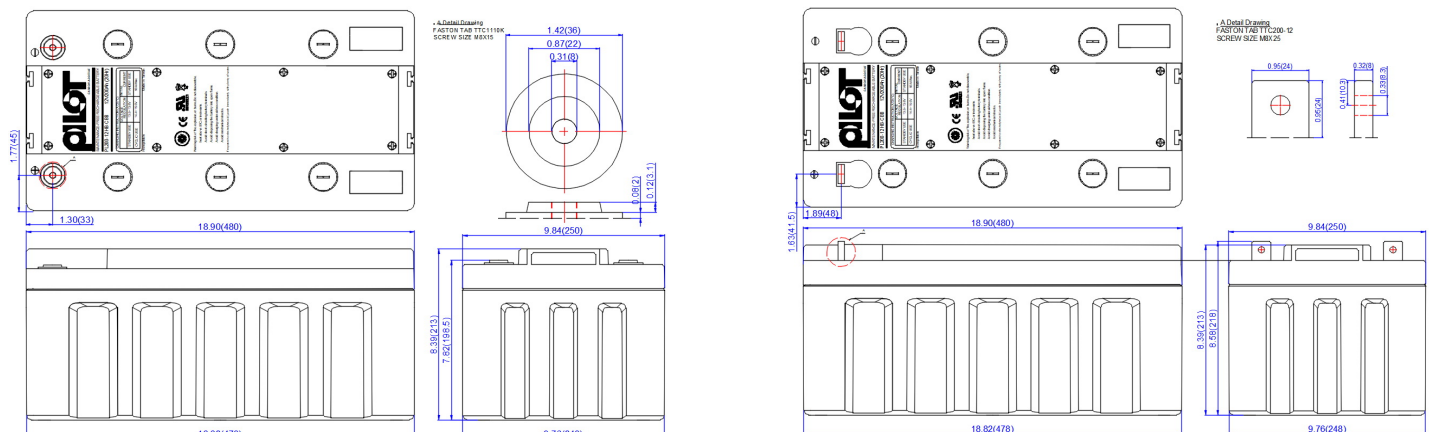
規格Specification

額定電壓 Rated Voltage	12V	
額定容量 Rated Capacity	200AH/20Hr/10.5V	端子 Terminal: 螺栓(M8 Bolt)
尺寸 Dimension	長度 Length	480±1mm(18.90in)
	寬度 Width	250±1mm(9.84in)
	高度 Height	213±1mm(8.39in)
	總高度 Total Height	213±1mm(8.39in)
重量 Weight	61 kg(134.2Pounds)	
電槽材質 Container Material	ABS, UL 94V-0 or UL 94-HB 抗酸、抗油、防震 Resist acid, resist oil, resist vibration	氧氣指數 Index of oxygen L.O.I>28%
電解液型式 Type of electrolyte	AGM 不外漏 Non-spillable	

特性 Properties

容量 Capacity 25°C(77°F)	20 小時率 20HR of 10.0A to 10.5V	200AH
	5 小時率 5HR of 32.4A to 10.5V	162AH
	1 小時率 1HR of 130.0A to 10.5V	130AH
	0.5 小時率 0.5HR of 210.0A to 10.5V	105AH
內阻 Internal Resistance (at 1KHz)	完全充電 Full Charge at 25°C(77°F)	大約 Approx. 2.9mΩ
容量受溫度影響 The capacity will be effected by temperature	40°C(104°F)	105%(20HR to 210AH)
	25°C(77°F)	100%(20HR to 200AH)
	0°C(32°F)	85%(20HR to 170AH)
	-20°C(-4°F)	60%(20HR to 120AH)
最大放電電流 5 秒 Maximum Discharge Current at 5 Sec		1300.0A(6.5CA)
浮充 Float Charging	電壓 Voltage	13.65±0.15V 25°C(77°F)
	電流 Current	60.0A(0.3CA)
循環充電 Cyclic Charging	電壓 Voltage	14.70±0.30V 25°C(77°F)
	電流 Current	50.0A(0.25CA)
操作溫度 Operation Temperature Range	充電 Charge/放置 Storage: -15~50°C(5~122°F), 放電 Discharge: -20~50°C(-4~122°F)	
期待壽命 Expected Life	25°C(77°F) 10~12 years	
性能特點 Performance characteristics	擁有超級電容瞬間大容量充電的優點，也發揮了鉛酸電池的比能量優勢，且非常好的充電性能，優異的低溫啟動能力，更長的循環壽命。 Has the advantages of instantaneous supercapacitor charging capacity, but also play a lead-acid batteries than the energy advantages, and very good charging performance, excellent low temperature start-up ability, longer cycle life.	

尺寸 Dimension: inch (mm)



Performance specification Amperes and watts per battery at 25°C (77°F)

F.V.	Time Item	Minutes							Hours							
		15	20	25	30	35	40	45	1	2	3	4	5	8	10	20
1.60 (9.60)	A	362.0	318.0	266.0	238.0	216.0	200.0	182.0	140.0	80.0	56.0	44.0	35.6	23.3	20.4	11.2
	W	3982	3498	3059	2737	2484	2300	2093	1610	936	655	515	427	279	245	134
1.65 (9.90)	A	340.0	296.0	252.0	224.0	204.0	188.0	172.0	136.0	79.0	55.3	43.0	35.2	22.8	20.0	11.0
	W	3740	3256	2898	2576	2346	2162	1978	1564	924	647	503	422	273	240	132
1.70 (10.2)	A	320.0	278.0	240.0	216.0	196.0	178.0	168.0	132.0	77.0	54.0	41.5	34.4	22.3	18.8	10.4
	W	3520	3058	2760	2484	2254	2047	1932	1518	901	632	486	413	267	226	125
1.75 (10.5)	A	298.0	264.0	230.0	210.0	188.0	172.0	160.0	130.0	73.0	50.7	39.5	32.4	21.8	18.4	10.0
	W	3278	2904	2645	2415	2162	1978	1840	1495	854	593	462	389	261	220.8	120
1.80 (10.8)	A	272.0	242.0	218.0	196.0	180.0	164.0	156.0	126.0	70.0	50.0	38.5	31.6	21.0	17.6	9.8
	W	2992	2662	2507	2254	2070	1886	1794	1449	819	585	450	379	252	211.2	118
1.83 (10.98)	A	234.0	202.0	186.0	174.0	156.0	140.0	134.0	120.0	69.0	47.3	36.5	29.6	20.5	16.4	9.2
	W	2574	2222	2139	2001	1794	1610	1541	1380	807	554	427	355	246	196.8	110

用途 Application

- ☆ UPS 緊急備用電源
UPS emergency backup power
- ☆ 通信系統
Communication back-up systems
- ☆ 電力系統
Power systems
- ☆ 太陽能儲備系統
Solar storage power systems
- ☆ 緊急照明
Emergency lighting
- ☆ 防火、保全系統
Fire, security systems

密閉結構 Seal construction

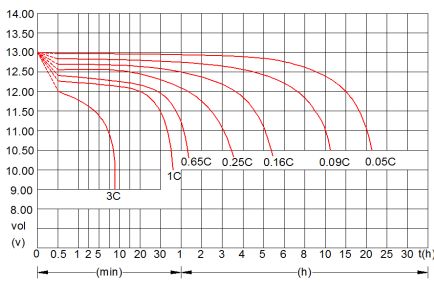
- ☆ 沒有漏酸的危險，氣體釋放率超低，不需加水，能防止電解液乾枯或產生層化現象(於放電時)再組合率大於 98%
- Non-spillable, no leaking danger, the gas consumption rate is low, no need to replenish water, can avoid acid lack or crystallization problem during discharge, the recombination rate is higher than 98%
- ☆ 極柱採用鉛錫合金或合金銅鍍鉛材質
The polarities adopted Antimony-Lead alloy or copper alloy covered with Lead material.

穩定性 Stabilities

- ☆ 正負極板是鉛銀合金
Positive and negative plates are lead silver alloy.
- ☆ 塑殼是防火 ABS 或等級是 UL 94V-0 L.O.I.>28%
- The plastic material is fire-resistance ABS or same grade of UL 94V-0 L.O.I. >28%
- ☆ 組立用螺絲採用 M8 螺絲，扭力從 7N-m 至 10N-m(最大)採用不銹鋼材質，堅固耐用。
Assembling screws using M8 screws, torque from 7N-m to 10N-m (maximum) made of stainless steel, durable.

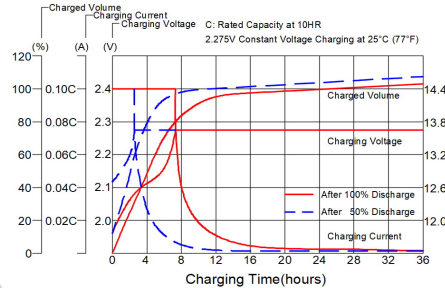
放電特性(25°C)

Discharge characteristic at different rates(25°C)



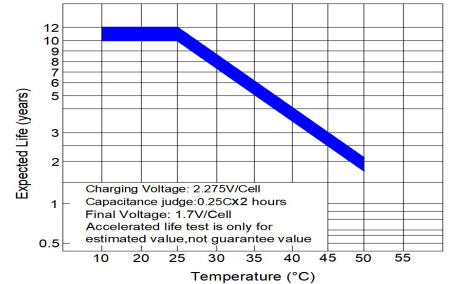
定電壓充電(25°C)

Charging Characteristics



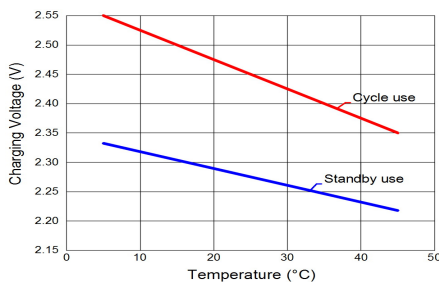
壽命與溫度關係

Accelerated Life Characteristic



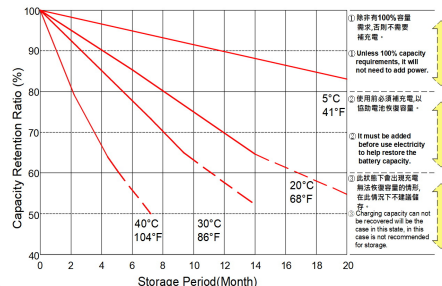
溫度與充電電壓關係

Relationship Between Temperature And Charging Voltage



容量保持特性

Capacity Retention Characteristics



壽命循環關係

Cycle Service Life

